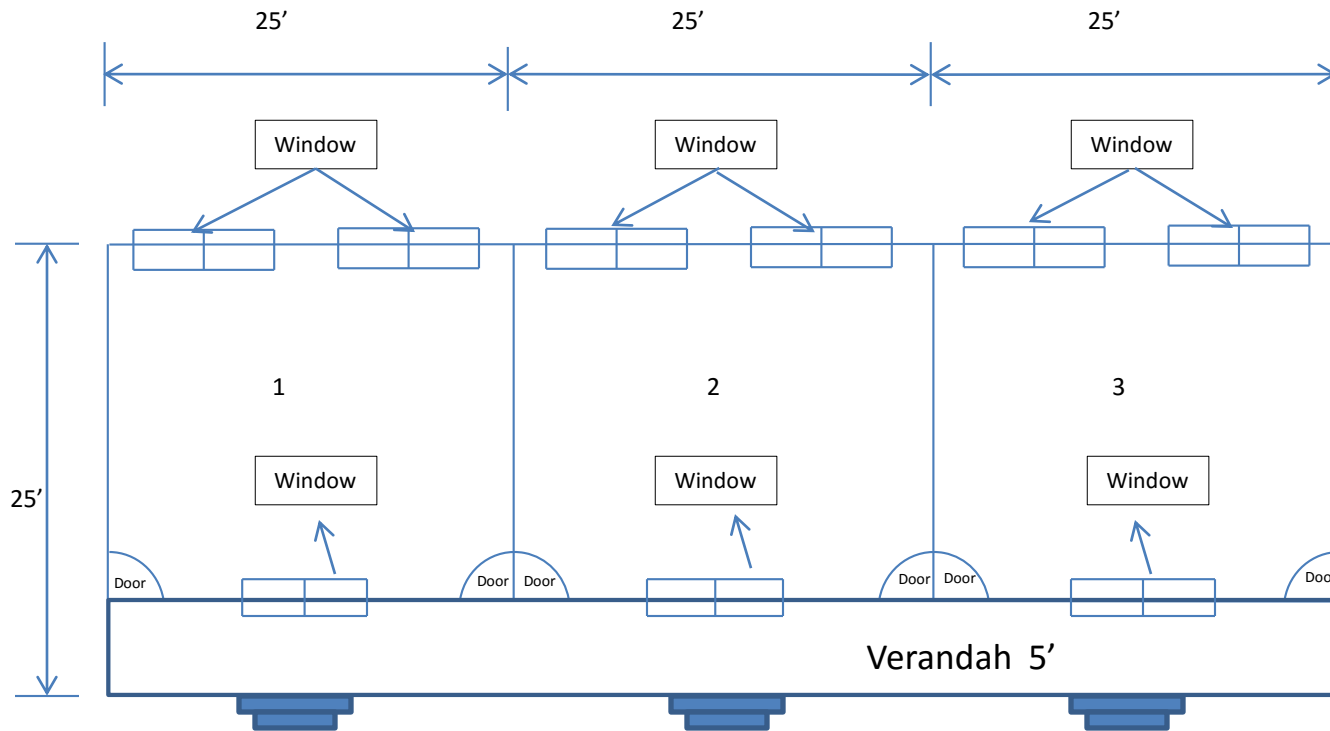


DESIGN OF 3 NO. PREFABRICATED CLASSROOM
AT ARMY PUBLIC SCHOOL DHAR ROAD,UDHAMPUR



Total Area – $75' \times 25' = 1875' \text{ sqft}$

Classroom – $25' \times 20' = 500' \text{ sqft} \times 3' = 1500' \text{ sqft}$

Corridor / Verandah – $75' \times 5' = 375' \text{ sqft}$